

# IGNITION COIL TESTER

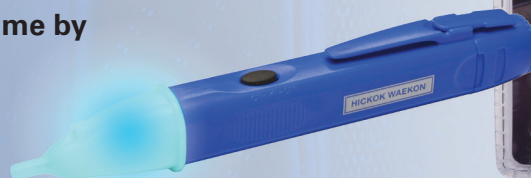
76500

## INSTANTLY VERIFY AN ACTIVE OR INACTIVE COIL, NON-INTRUSIVE QUICK CHECK TOOL.

Easy to use and saves time. Instantly verify an active or inactive ignition coil by simply placing the sensing tip near the coil while engine is cranking or running at idle. During normal operation, an ignition coil creates an open magnetic field each and every time the coil is energized. By placing the sensing tip of the tool near or against the ignition coil, a blue LED will illuminate each time a magnetic field is detected.

Quickly test coil on plug, coil near plug and coil pack ignition systems without any disassembly. Save time by using the pocket sized tester to identify spark related problems on combustion engines.

**NEW**



### Easy To Use

Quick, easy testing. Non-intrusive, quick check tool instantly verifies active or inactive coil operation.

### Versatile

Designed for versatile testing. Tool can be used to test coil on plug, coil near plug and coil pack systems.

### Specifications

Power supply:	2x AAA (LR03) battery
Sensitivity:	300 Gauss (30mT)
Operating temperature:	14 to 122° F
Operating humidity:	<80%
Overvoltage:	CAT III 1000V AC

### Kit Includes

- Ignition Coil Tester
- Selt test magnet cap
- (2) AAA (LR03) battery



**WATCH DEMO VIDEO & MORE INFO**

hickokwaekon.com  
Toll Free 800-342-5080

**HICKOK WAEKON**

©2022 Hickok Waekon all rights reserved.

